



The background of the image is a detailed technical drawing of various aircraft engine components, including compressor casings, turbine sections, and shafts. In the center, there is a large, stylized logo consisting of a diamond shape with a horizontal bar across it. The text 'H9W' is prominently displayed in a large, bold, serif font, with 'AVIATION' written in a smaller, all-caps serif font below it. Technical specifications and section lines are visible on the components, such as 'SECTION AA' and dimensions like 0.51, 0.15, 1.48, and 2.00.

# H9W

AVIATION



Innovative products to make  
aircraft building and maintenance  
a little easier, a little more fun.

[www.h9waviation.com](http://www.h9waviation.com)

[illegible]





## What We Offer:

## How We Do It:

- 3D Drawing & Design
- CNC Machining (3, 4, and 5-Axis)
- Wire Cutting & Laser Cutting
- Metal 3D Printing (SLS)
- Plating & Coating
- Welding & Assembly

We start with your requirements, refine the design until you're happy, and send a demo (cutout or 3D print) to confirm alignment. Once approved, we source high-quality materials and precision-machined components from Thailand. Every item is personally assembled and rigorously quality-checked by our team to ensure the best value without compromising quality.

# H9W PRODUCTS

## AVIATION SPECIALTY TOOLS



[www.h9waviation.com](http://www.h9waviation.com)

# TAPERED SHAFT PROPELLER HUB REMOVAL AND INSTALLATION TOOL



Designed to assist in the removal and installation of tapered shaft propeller hubs on small Continental engines, such as the A-65.

Crafted from chrome-plated tool steel with a 1/2-inch drive for torquing the hub post-installation. Includes a 5/8-inch pin for attaching to the hub. Designed with a lip to also function as a persuading tool for loosening stubborn hubs.

## SAE 20 PROPELLER HUB TORQUE TOOL

A special socket tool designed for the installation and removal of propeller hubs from SAE 20 splined shafts, such as those used with wood propellers on Continental W670 and Jacobs R-755 engines.

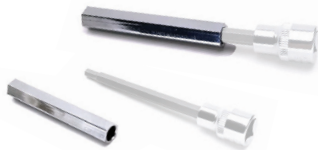


Made from hardened 4140 steel and chrome-plated, this tool features a 3/4-inch socket drive. It includes a 13/16-inch Grade 12.9 pin to secure it to the propeller hub. The design incorporates two cutouts to allow for easier alignment of the safety pins.

# MD500 THROTTLE TORQUE TUBE HOLDING TOOL



Specifically tailored for holding MD500 helicopter throttle torque tube.



# ENGINE LIFTING LUG FOR ROLLS ROYCE 250-C20 (BELL 206B)



Lifting lug designed specifically for lifting Rolls-Royce 250-C20 engines, as used in Bell 206B helicopters. This Stainless steel tool is laser CNC-cut and TIG-welded for strength and reliability.

## CUSTOM TOOLS & FABRICATION SERVICES

At H9W Aviation, we create custom tools and components tailored to your needs. From 3D drawing and tool design to advanced technologies like CNC machining, wire cutting, laser cutting, welding, and so much more, we deliver precision solutions for any project. Whether you need a one-off prototype or a full production run, our team is equipped to bring your ideas to life with efficiency and expertise. Contact us to bring your ideas to life.

## METAL 3D DESIGN & PRINTING SERVICES

H9W Aviation offers SLS (Selective Laser Sintering) metal 3D printing services, providing a cost-effective solution to produce custom parts and tools. We create complex, high-strength components in materials such as stainless steel, aluminum, titanium, and more, with exceptional precision, durability, and low minimum order quantities (MOQ).

Whether you need prototypes, custom tools, or low-volume production parts, our metal 3D printing services deliver a fast, affordable, and flexible alternative to traditional manufacturing, helping you bring your designs to life.

## CONTINENTAL OIL SCREEN SOCKET

A specialized socket tool designed for removing the oil screen from small Continental engines. It features a 3/8-inch socket drive and a 3/4-inch hex for use with a wrench, and is 3D-printed from stainless steel.



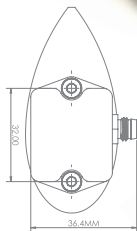
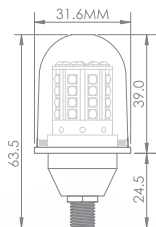
## SQUARE SOCKETS FOR AN PLUGS

Specially designed for AN913/MS20913-1/2/3/4 pipe plugs. SLS-printed stainless steel.



# H9W PRODUCTS

## STROBE LIGHTS FOR EXPERIMENTAL AIRCRAFT



[www.h9waviation.com](http://www.h9waviation.com)

# STROBE LIGHT

## FOR EXPERIMENTAL AIRCRAFT - VO1TB



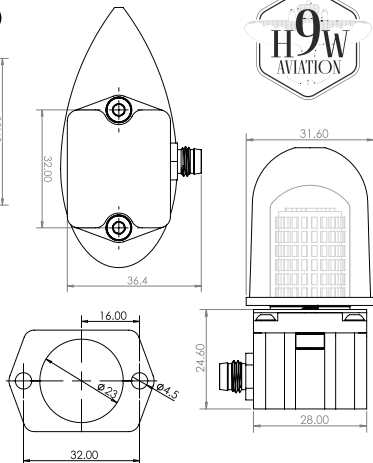
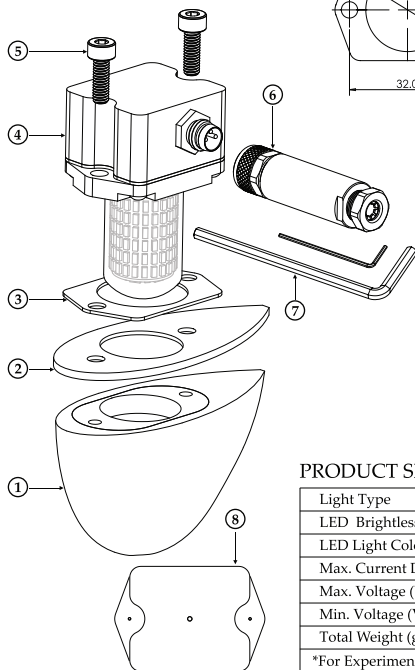
Enhance your aircraft's visibility with a simple and aerodynamic strobe light, designed to be unobtrusive and easy to install.

**Optimized for installation on the top and/or bottom of an aircraft fuselage**, it features a streamlined polycarbonate lens and a durable aluminum body. Each strobe unit **weighs less than 100 grams**.

At the heart of each unit is a bright LED bulb, delivering approximately 2,600 lumens in a two-short-flash, one-long-pause sequence. This is achieved through an integrated controller, eliminating the need for an external strobe driver.

This product is Non-TSO'd and uncertified. It is NOT approved for use on certified aircraft. It is up to the user to determine the airworthiness of their specific application.

## PRODUCT DIMENSIONS (mm)



## INCLUDED COMPONENTS

- ① Translucent polycarbonate lens; 6061 aluminum holder plate.
- ② TPU rubber outer gasket.
- ③ TPU rubber inner gasket.
- ④ 2600 Lumen LED module; 6061 aluminum holder case;
- ⑤ Stainless steel M4\*12mm socket head cap screw.
- ⑥ M8 Nano connector.
- ⑦ 0.9mm and 3mm hex key.
- ⑧ Drilling guide template.

## PRODUCT SPECIFICATIONS

Light Type	Flashing Strobe Light
LED Brightless	2600 Lumens
LED Light Colour	White or Red
Max. Current Draw (amps)	0.5A
Max. Voltage (Volts)	14.2V
Min. Voltage (Volts)	12V
Total Weight (grams) - Single Unit	97 g
*For Experimental Aircraft Applications Only	



# STROBE LIGHT

## FOR EXPERIMENTAL AIRCRAFT - V02SW



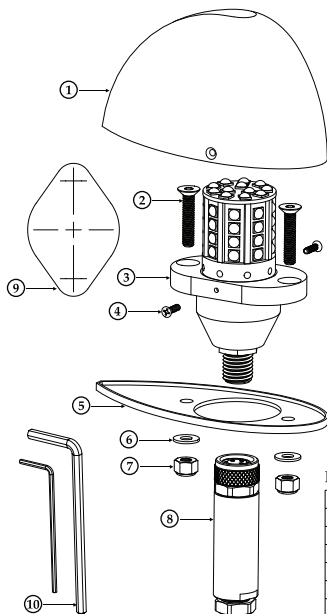
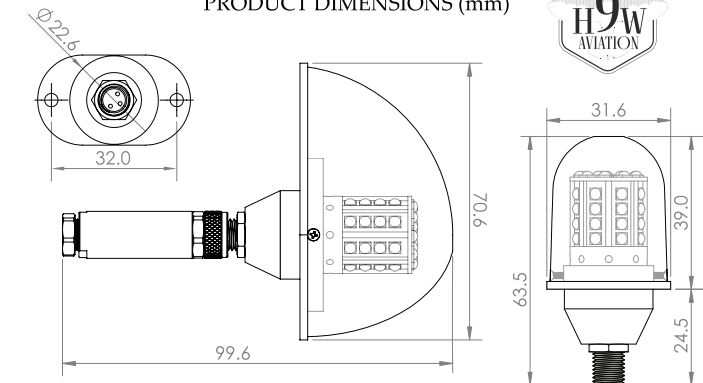
Achieve enhanced aircraft visibility with this versatile, aerodynamic strobe light, specifically designed for installation in narrow and challenging locations where interior access is limited.

**Optimized for installation on vertical stabilizers and wingtips**, it features a streamlined polycarbonate lens and a durable aluminum body. Each strobe unit **weighs less than 80 grams**.

At the heart of each unit is a bright LED bulb, delivering approximately 2,600 lumens in a two-short-flash, one-long-pause sequence. This is achieved through an integrated controller, eliminating the need for an external strobe driver.

This product is Non-TSO'd and uncertified. It is NOT approved for use on certified aircraft. It is up to the user to determine the airworthiness of their specific application.

## PRODUCT DIMENSIONS (mm)



## INCLUDED COMPONENTS

- ① Translucent polycarbonate lens;
- ② 2 x Stainless steel M3\*15mm countersunk screw.
- ③ 2600 Lumen LED module; 6061 aluminum holder case; M8 Nano connector - Male.
- ④ 2 x Stainless steel M1.6\*6mm countersunk screw.
- ⑤ TPU rubber outer gasket.
- ⑥ 2 x Stainless steel M3 washer.
- ⑦ 2 x Stainless steel M3 locknut.
- ⑧ M8 Nano connector - Female.
- ⑨ Drilling guide template.
- ⑩ 0.9mm and 2mm hex key.

## PRODUCT SPECIFICATIONS

Light Type	Flashing Strobe Light
LED Brightness	2600 Lumens
LED Light Colour	White or Red
Max. Current Draw (amps)	0.5A
Max. Voltage (Volts)	14.2V
Min. Voltage (Volts)	12V
Total Weight (grams)	70 g
*For Experimental Aircraft Applications Only	



H9W Aviation Ltd. is a Canadian small business with a passion for flight.

We are dedicated to developing high-quality tools and parts that streamline aircraft building and maintenance processes. By leveraging 3D drawing design, CNC machining, and 3D printing technologies, we bring innovative tool and part concepts to life with precision and efficiency.

We believe in making aircraft building and maintenance more accessible and enjoyable.

To achieve this, we source high-quality, competitively priced materials and precision-machined components directly from Thailand. Our team then personally assembles and conducts rigorous quality checks on every item, ensuring you receive the best value without compromising on quality.

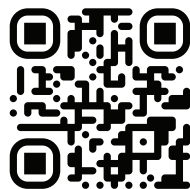


## **H9W AVIATION LTD.**

+1 780 360 4082 INFO@H9W-AVIATION.COM  
4510 61A WETASKIWIN AIRPORT, AB, CANADA

 /H9W.AVIATION

 /H9W.AVIATION



**WWW.H9WAVIATION.COM**