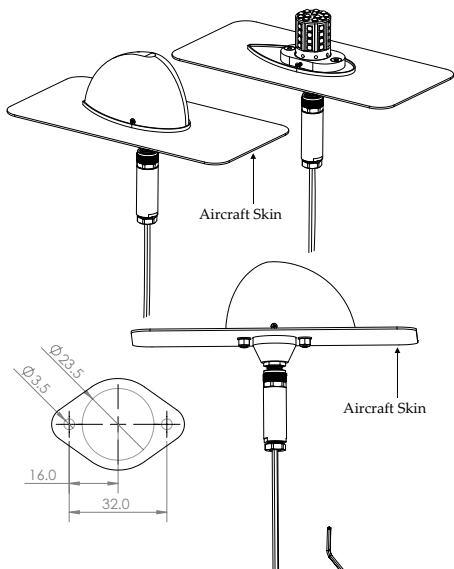




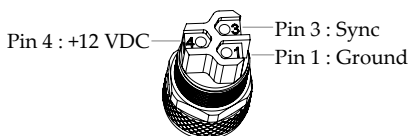
# H9W AERODYNAMIC LED STROBE LIGHT OMV1

## INSTALLATION INSTRUCTIONS



M8 Nano Connector

The included M8 Nano Connector uses screw terminals, a 0.9 mm allen key is included.



A 90-degree version of the M8 Nano Connector is available for purchase separately for installations in tighter spaces.  
(Not included in standard package)



Minimum 20 AWG wire is recommended for all connections.

Please do not hesitate to contact H9W with any questions regarding your installation.  
info@h9w-aviation.com

### Location Selection:

- Choose a suitable location for the installation of the strobe light. Ensure sufficient space around the unit for wiring to run without tight bends.
- Included for installation are M3 countersunk screws and locknuts. Alternatively, the locknuts can be replaced with suitable nut plates if the back of the light is inaccessible.

### Drilling:

- At your chosen location, mark and drill the three required holes using the provided drill guide sticker. Two 3.5mm (or 1/8 inch) holes and one 23mm hole are required.

### Wiring:

- Refer to the **wiring diagram** for a typical system installation.

### Single Light Installation:

- Connect to switched 12V power via a 1-amp circuit breaker, and ground.

### Dual Light Installation:

- Light 1: Requires 12V power, ground, and a sync connection to Light 2.
- Light 2: Requires 12V power and the sync connection to Light 1. The sync connection allows the two lights to flash in synchronization.

### Assembly:

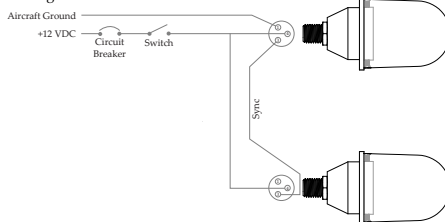
- Connect the M8 Nano connector, then place the gasket.
- Install the LED light unit through the hole and secure it with the M3x15 countersunk screws and nuts. These screws can be replaced with longer ones if required by the aircraft skin thickness.
- Press the lens into place and secure it with two M1.6x6 countersunk screws, \*\*it is recommended to use loctite on the lens mounting screws.

### Wiring Diagram ( Typical installation )

#### Single light installation



#### Dual light installation

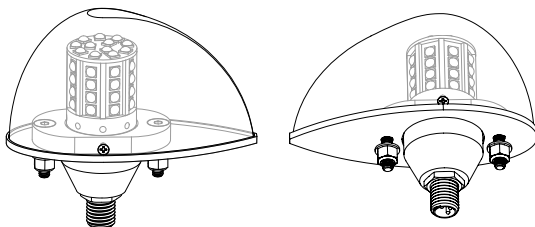
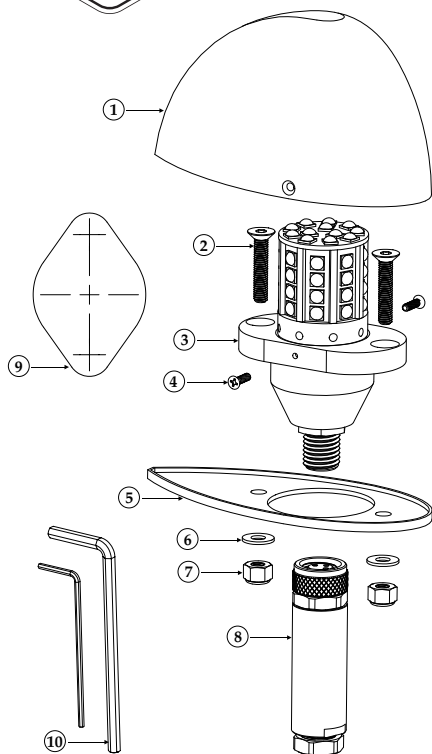


### Disclaimer

This product is Non-TSO'd and uncertified. It is NOT approved for use on certified aircraft. It is up to the user to determine the airworthiness of their specific application.

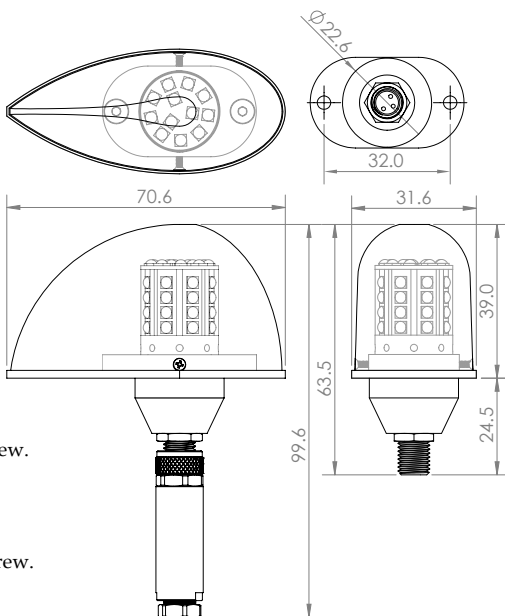


# H9W AERODYNAMIC LED STROBE LIGHT OMV1



## PRODUCT SPECIFICATIONS

Light Type	Flashing Strobe Light
LED Brightness	2600 Lumens
LED Light Colour	White or Red
Max. Current Draw (amps)	0.5A
Max. Voltage (Volts)	14.2V
Min. Voltage (Volts)	12V
Total Weight (grams)	70 g
*For Experimental Aircraft Applications Only	



## INCLUDED COMPONENTS

1. Translucent polycarbonate lens;
2. 2 x Stainless steel M3\*15mm countersunk screw.
3. 2600 Lumen LED module;  
6061 aluminum holder case;  
M8 Nano connector - Male.
4. 2 x Stainless steel M1.6\*6mm countersunk screw.
5. TPU rubber outer gasket.
6. 2 x Stainless steel M3 washer.
7. 2 x Stainless steel M3 locknut.
8. M8 Nano connector - Female.
9. Drilling guide template.
10. 0.9mm and 2mm hex key.

## COMPONENTS REQUIRED TO COMPLETE INSTALLATION

1. On-off switch.
2. Electrical wire - Recommend 20AWG or thicker.
3. Circuit breaker - Recommend Klixon 7277-1 or equivalent  
1 amp circuit breaker.